

MGA - Planning

Management of works planning using inputs of available capacities of the entities and the capacity used by them in the work performed. Contains the following layouts:

- **Factory:** visualization of VESAM's global capacity by process based on available capacities introduced in entities
- **Activities :** visualization of VESAM works activities planned by entity
- **Executions :** visualization of executions associated with VESAM works planned by entity
- **Week :** visualization of the work planned and executed in the last week “closed” against the current day of visualization and planning of the following week by entity

All information displayed is based on works in progress or closed for less than 30 days.

Assignment: Available Capacity Entity

Layout : Module SYS/Entities

Ordem	Abrev.	Designação	Ind. Atividade	Capacidade Total	Capacidade VESAM
1	OC	Orçamentação	Projeto	<input type="text"/>	<input type="text"/>
2	CD	Conceção e Desenvolvimento	Projeto	<input type="text"/>	<input type="text"/>
3	PD	Projeto / Detalhe	Projeto	<input type="text"/>	<input type="text"/>
4	AP	Aprovisionamento	Fabrico	<input type="text"/>	<input type="text"/>
5	TF	Transformação	Fabrico	<input type="text"/>	<input type="text"/>
6	AS	Assemblagem e Soldadura	Fabrico	<input type="text"/>	<input type="text"/>
7	PM	Pré-montagem	Fabrico	<input type="text"/>	<input type="text"/>
8	DM	Desmontagem	Fabrico	<input type="text"/>	<input type="text"/>
11	ET	Ensaio / Testes	Fabrico	<input type="text"/>	<input type="text"/>
12	MA	Manutenção	Fabrico	<input type="text"/>	<input type="text"/>

- select an entity
- Select a certain process aggregated to the entity
- Insert “Total Capacity” of the entity in relation to the selected process
- Insert “VESAM Capacity” of the entity in relation to the selected process

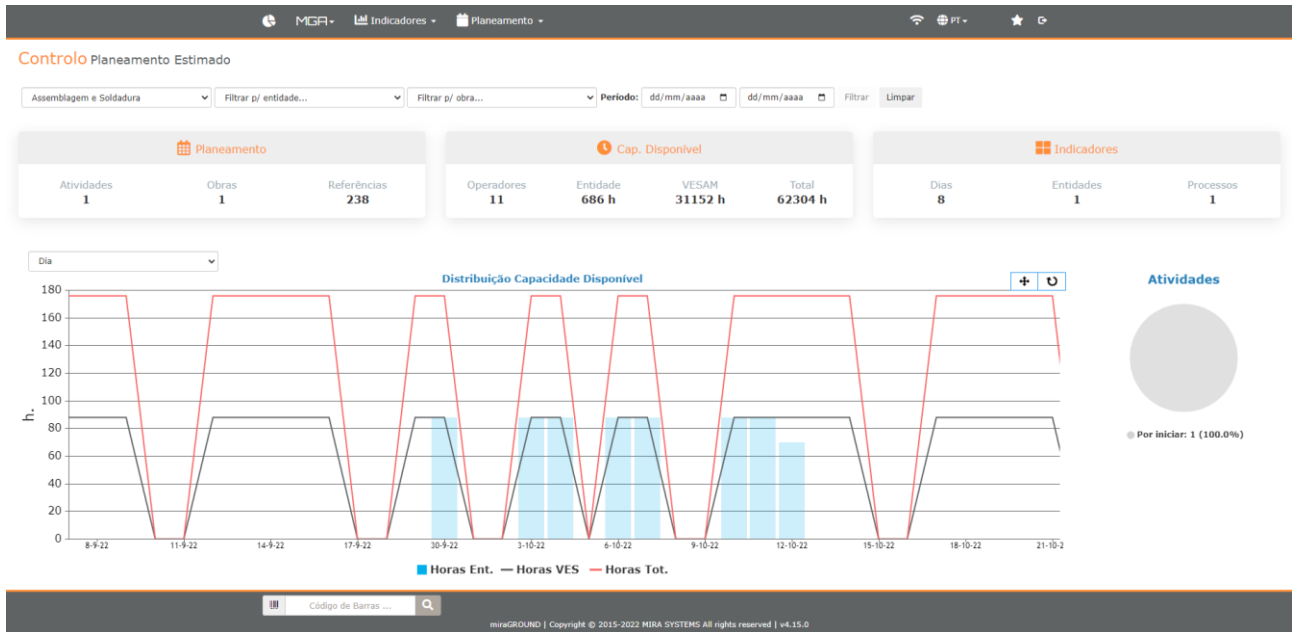
Total Capacity: the entity's total capacity is understood to be the capacity (number of operators) of the entity for a given process.

VESAM capacity: the entity's VESAM capacity is understood to be the entity's capacity (number of operators) for a given process available to VESAM.

Available Capacity: it is considered that the daily workload of the entities corresponds to 8 hours. That is, 1 operator = 8 hours available.

Monitoring: VESAM global Planned Capacity

Layout : MGA/Planning/Factory Module



Summary by process of total capacity, VESAM capacity and planned capacity allocated to entities for work activities in progress or closed for less than 30 days. In line appear the global capacity and VESAM capacity of a given entity (or all those that have it) and in column the capacity allocated to the entity's activities (or all). The time period considered encompasses the activity with the earliest planned date of the selected process and the latest planned completion date in the case of total capacities and VESAM (lines). In the case of the column (allocated capacity) the activities already with values introduced in the allocated capacities are considered.

Assignment: Planned Capacity Entity

Layout : MGA/Planning/Activities Module

Planeamento de Atividades

13/419 | 1/1 | Exportar | Editar

Obras	Proc.	Atividades	Monit.	Início	Concl.	Ref.	Q Prv.	P Prv.	A Prv.	Estado	Oper. Ent.	Hora/1 Un	Horas	Dias	Valor/Dia	Valor/Smm	Concl. Est.	Dif.
Obra A	TF	Atividade 45.2	kg	22/09/22	11/10/22	307	478 un	780782 kg	244030 m2	0.0%	2	0.250	195 h	13 d	64000.00 kg	320000.00 kg	11/10/22	
Obra A	AS	Atividade 45.5	kg	30/09/22	14/10/22	238	636 un	980100 kg	356528 m2	0.0%	11	0.700	686 h	8 d	125714.29 kg	628571.43 kg	12/10/22	

Detalhes

Atividade	45.5	Atividade 45.5	Entidade	Entidade 1	Início	30/09/22	Hora/1 Un	0.70 h
Obra	Obra A - Postes		Cap. Total	22	Conclusão	14/10/22	Horas	686 h
Estado	0.0%		Cap. VESAM	11	Concl. Est.	12/10/22	Dias	8 d
Q Prv.	636 un		Oper. Ent.	11			Valor/Dia	125714.29 Kg
P Prv.	980100 kg						Valor/Smm	628571.43 Kg
A Prv.	356528 m2							

Cronogramas

Tipo	Início	10 d	14-10-22	Duração	Conclusão
Previsto	30/09/22			10 d	14/10/22
Estimado	30/09/22			8 d	12/10/22

- table assignment
 - Enable table editing
 - Assign values to various activities
 - Write assigned values
- individual attribution
 - Select a certain activity
 - Assign values to this activity
 - Write assigned values

Values to insert in an activity:

Operator _ Ent .: Number of operators allocated to a given activity. Allocated hours will be equal to the number entered x 8 hours.

Hour/1 unit : Value in hours that the entity associated with the activity takes to complete 1 unit of the plan. The unit considered is the one added to the activity:

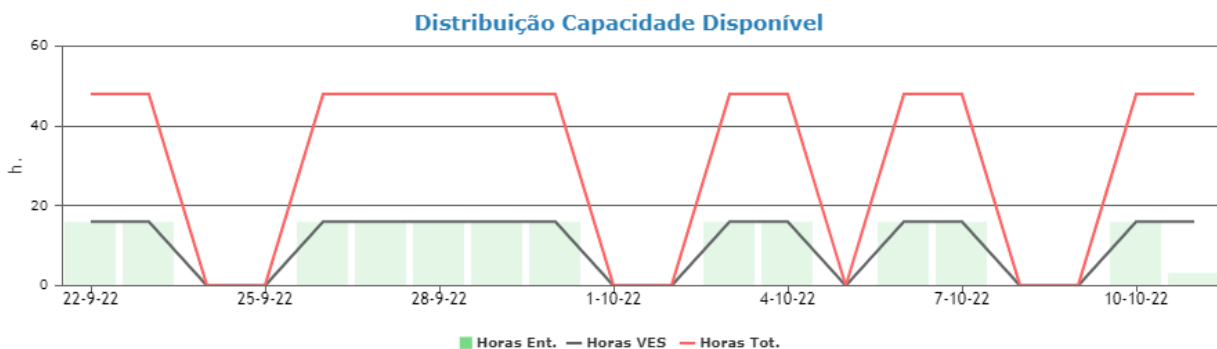
- Units (un .): value that the entity takes to make 1 unit
- Kilos (kg): value that it takes an entity to make 1 ton
- Square meters (m2): value it takes an entity to make 1 m2

After assigning the load to the activity, some indicators and graphs are available based on the values entered:

- **Hours :** number of hours estimated to complete the activity
- **Days :** estimated number of days to complete the activity
- **Value/Day :** estimated value produced per day by the entity in the activity
- **Value/Week:** estimated value produced per week by the entity in the activity
- **concluded _ Est .:** estimated end date for completion of the activity
- **Diff .:** illustrates variation between estimated end date and original planning end date
 - Green color: estimated date less than or equal to the planned date
 - Yellow color: estimated date up to a week higher than the planned date
 - Red color: estimated date greater than one week from the planned date

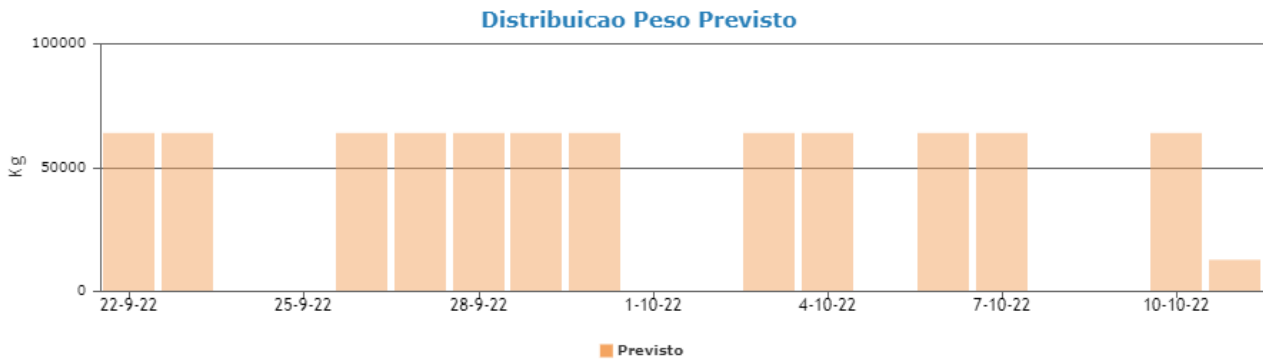
- **Hour distribution chart (allocated capacity)**

Given the value introduced and calculating the entity's daily allocated capacity, this load is distributed over the estimated days of the activity (the last day being the remainder compared to the total that does not complete an estimated day in its entirety).



- **Quantity/weight/area distribution chart**

Given the value introduced and calculating the estimated daily value of execution of the unit considered, this value is distributed over the estimated days of the activity (the last day being the remainder compared to the total that does not complete an estimated day in its entirety).



Assignment: Executed Capacity Entity

Layout : MGA Module/Planning/Executions

MGA - Indicadores - Planeamento

Lista de Execuções

44/44 1/1 Exportar Inserir Carga

Inserir carga de ocupação nas execuções selecionadas.

Campo Valor
 Nº Operadores 2
 Nº Horas 16
 Guardar Cancelar

Código	Designação	Data	Posto	Resp.	Operações	Oper.	Equip.	Ref.	Carga H	Sel.	Oper.	Hor
<input checked="" type="checkbox"/>	EXE-INFO-107	Execução-INFO - Controlo Info-107	07/10/22	INFO	---	INF	SC	1				
<input checked="" type="checkbox"/>	EXE-INFO-106	Execução-INFO - Controlo Info-106	07/10/22	INFO	---	INF	SC	1				
<input checked="" type="checkbox"/>	EXE-INFO-105	Execução-INFO - Controlo Info-105	07/10/22	INFO	---	INF	SC	1				
<input checked="" type="checkbox"/>	EXE-INFO-104	Execução-INFO - Controlo Info-104	07/10/22	INFO	---	INF	SC	1				

Totais - Execuções: 4

Código de Barras ...

miraGROUND | Copyright © 2015-2022 MIRA SYSTEMS All rights reserved | v4.15.0

Assignment of values for executions in the period:

- Select 1 or more runs
- Assign value to # operators
- Assign value to number of hours (busy time)

The values entered are aggregated to the set of selected runs (with identifier in column **Sel .**)

Purpose is to indicate that the set of selected executions took a certain time to be executed by a certain number of operators.

Layout : MGA Module/Planning/Executions/Details

Shows **Activities** associated with the run.

Show **List of Runs** associated with the selection group used when inserting inputs.

Edit Execution Set:

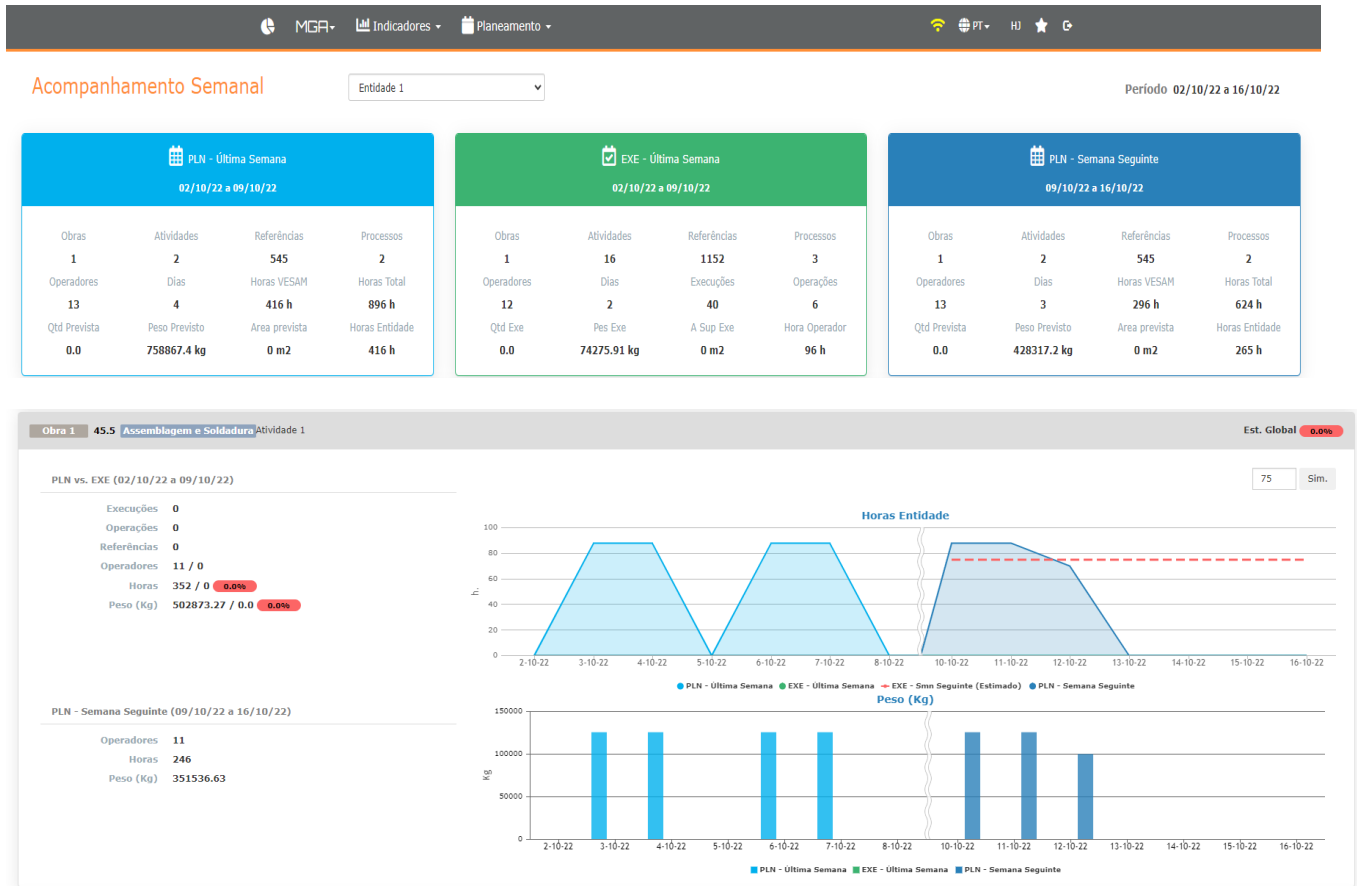
- Changing values in the details of 1 run of that selection group (value will be reflected in the remaining runs of the same group), if the edit corresponds to writing the values with 0 or empty field, it corresponds to clearing the values of that selection of runs

Clear only 1 run:

- Use **Clear** option present in the details of 1 selected run (so other runs that were part of the same selection group keep the values and the current one has no values)

Follow-up : Last week and next

Layout : MGA/Planning/Week Module



Follow-up of the last complete week at the level of:

- Planning of activities with allocated load of the selected entity that are included in the period of the respective week.
- Work execution of the selected entity with workload assigned in the execution layout that has been carried out in the respective week period.
- Planning of activities for the following week of the selected entity that are included in the period of the following week.

Entity Hours Chart

It illustrates for the past week and the following week the hours allocated to the activity per day (taking into account whether the activity has been configured to count working days or all).

also illustrates the work performed (hours assigned in the runs layout) associated with this activity for the entire week.

Quantity/Weight/ Area Chart

Illustrates for the past week the executions and respective quantity/weight or area (depending on the activity unit) executed in the set of respective executions.

Simulator that allows entering the number of hours and simulating the work performed in the following week in this activity.